

**Gibraltar • Spain • Morocco • Malta • HUB**

**Head Office GIBRALTAR**

+350 200 12777  
agency.gibraltar@mhbland.com

**MOROCCO**

+212 539 935 875  
agency.tangier@mhbland.com

**SPAIN & HUB: Worldwide**

+34 956 798 027  
hub@mhbland.com

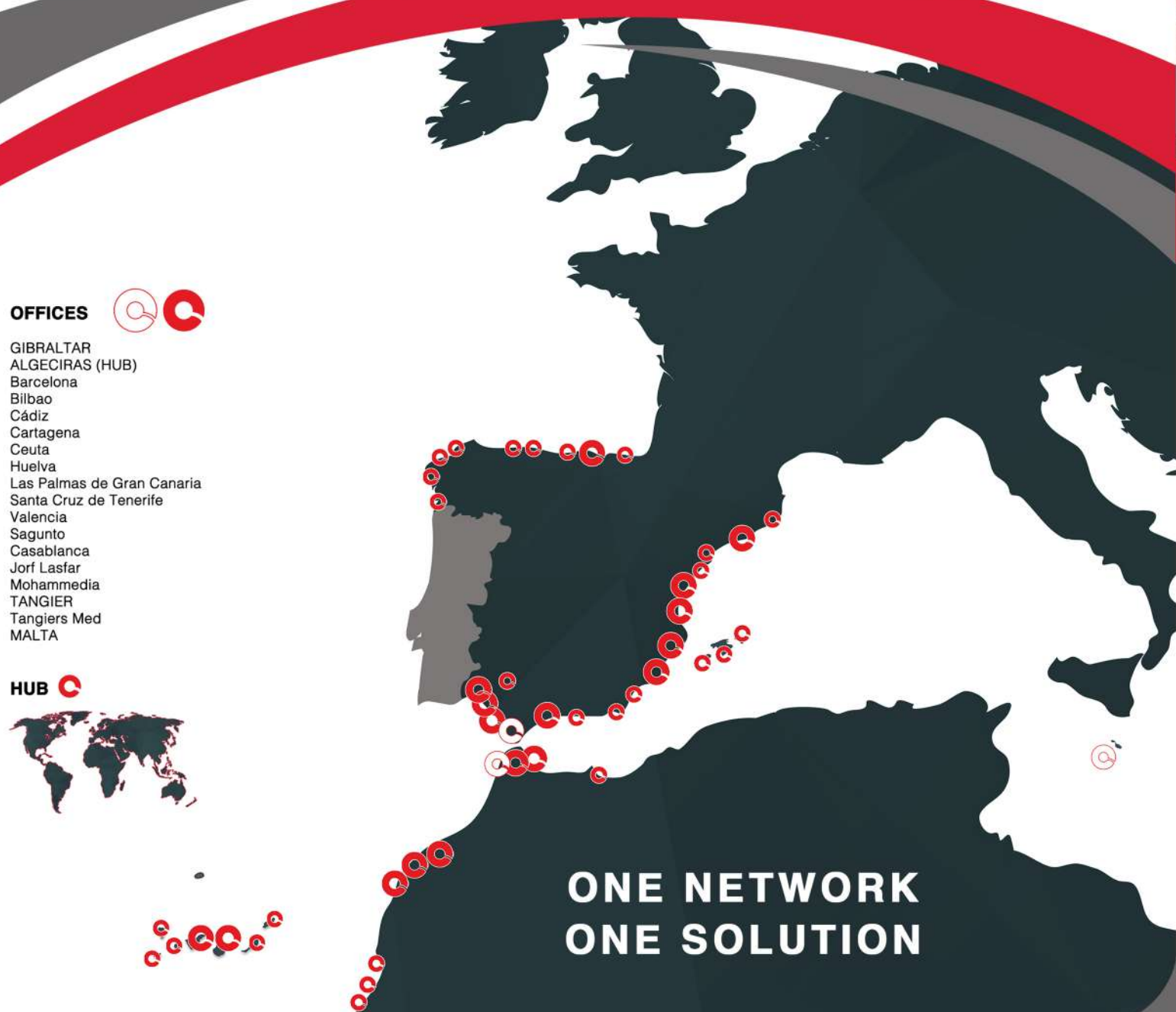
**MALTA**

+356 2703 9971  
agency.malta@mhbland.com

**OFFICES**

- GIBRALTAR
- ALGECIRAS (HUB)
- Barcelona
- Bilbao
- Cádiz
- Cartagena
- Ceuta
- Huelva
- Las Palmas de Gran Canaria
- Santa Cruz de Tenerife
- Valencia
- Sagunto
- Casablanca
- Jorf Lasfar
- Mohammedia
- TANGIER
- Tangiers Med
- MALTA

**HUB**



**ONE NETWORK  
ONE SOLUTION**



**GENERAL INFORMATION**

Located in northwest Africa, MH Bland has been operational in Ceuta since 2005. With its excellent strategic location on the African Continent and at the entrance of the Mediterranean, right in the Strait of Gibraltar, Ceuta is the ideal size for cruise ships navigating through the Western Mediterranean and Canary Islands.

Although relatively small in size, Ceuta offers all the services expected of a major port. A well sheltered natural harbour where ships can dock comfortably alongside the Cruise Terminal, with excellent port facilities for fuel supply, all at competitive prices.

The city, being a rich mix of Spanish and Moroccan cultures, is an interesting attraction in itself while the city fosters a strong business community and tax advantages and special tax regime (excluding IVA/VAT).

The port of Ceuta is open 24 hours. Compulsory pilotage services.

# PORT OF CEUTA FACILITIES

Ro-Ro • Containers • Liquid Bulks • Solid Bulks • Naval Repairs

## PORT AND TERMINALS INFO

**ISPS:** Yes **Unlocator Code:** ES CEU **Country:** Spain

**Time:** GMT +1 (summertime GMT +2)

**Longitude (Greenwich)** 5 ° 18 'W **Latitud** 35 ° 53' N.

**Prevailing Wind:** E **Dominating Wind:** SW

**Tides:** Max Range +6.76m

**Height of LLW to Port Zero:** +0.00m **Height of Max MMV to Port Zero:** +1.40m

**Breakwater Mouth:** Direction N **Width:** 300m **Draft S.L.W.:** 18m **Stream** Nil

**Restrictions:** Max Draft Alongside: 10m **Max Length:** 190m

**Communications:** Pilots: VHF CH12 **Ceuta Port Control:** VHF CH 11

### Emergency Contacts:

- Fire & Ambulance: 112 **National Police:** 091 **Country Police:** 092
- Medical Services: Public Hospital
- Harbour Master Office: 856 205 018
- Emergency Port Control: VHF CHS 12
- Port Authority Contact details: OPIP: Seguridad Puerto CEUTA  
T: +34 956 527 055 E: comisariop@puertodeceuta.com
- Usual Security Level: 1

**Airports:** Malaga 70 mins from Algeciras via road or 30mins via helicopter service.

**Workshops:** None. Mechanical, electronics & electrics must be ordered from the mainland

**Shipchandlers:** Yes



### Terminal Dimensions

**Max. Size:** Length: 220 m. Draft: 10.20m

Draft after Poniente dock: Length 229m Draft 12.5m

**Containers:** Max draft 09.50 m

**Passengers:** Max draft 07.50 m

**Bulk Carriers :** Max draft 09.50 m

**Tankers:** Max draft 09.50 m

**Monobuoy:** No draft limits

### Usage of Tugs within interior of harbour, min. units rules

Vessels G.R.T.	Nº of tugs
Up to 5.000	1
From 5.001 to 10.000	1
From 10.001 to 25.000	2

**Tug:** Bulldog **Power** HP 2720 **Year:** 1996

Be advised that for over 10.000Gt, it is mandatory to use 2 tugs to come in and out of port. The Port of Ceuta only has one tug, therefore a second tug would need to be requested from the Port of Algeciras on mainland Spain. This could cause serious delays to the ship. The cost of having to bring a second tug from Algeciras is aprox 3000 Euros + the hire of both tugs.

## FACILITIES AND MISCELLANEOUS

- Fresh water, Gas Oil & IFO 180: ex pipe in all the piers
- IFO 380: ex pipe in Muelle de Poniente2 and in Muelle de Levante
- Please be advised bunker discharges are at the same locations as bunker operations.  
Discharges at Poniente Quay are carried out at Muelle de Poniente 2 position  
Discharges at Levante Quay are carried out at both berth positions, subject to availability
- Marpol: by truck at the piers
- Cargo Slops & Electric Power Plugs : N/A at Ceuta port
- Boat Services: Crew changes & Spares delivery can be carried out up to 4 miles off shore.





## QUAYS & BERTHS

### Berths

Name of Berth	Length m	Width m	Depth SLW m	Usage
<b>IComercial Basins</b>				
Muelle Poniente1	252	58	7.50 to 9.50	General
Muelle Poniente2	268	44	8.50 to 9.50	Bulk Liquids
Muelle Poniente3	523	35	9.00 to 9.50	Bulk Liquids
Muelle Poniente4	250	35	8.50 to 9.50	Gen. & Bulk liquids
Muelle de Poniente Martillo	50	37	8.00 to 9.00	Gen. & RoRo Ramp
Muelle de Levante	501	35	7.00 to 7.50	Bulk Solids & Liquids
Muelle de Alfau	66	45	3.50	Bulk Solids & Liquids
Muelle España: Levante	176	77	9.00 to 9.50	Cruise Liners
Muelle España: Levante	90	60	8.00 to 9.00	Cruise Liners
Muelle Cañonero Dato	260	137	4.00 to 5.50	RoRo
Muelle de Levante	501	35	7,00 a 7,50	Bulk Solids & Liquids
Muelle de Alfau	66	45-55	3,5	Bulk Solids & Liquids
Muelle de Alfau	32	45-55	3,00 a 3,50	Slipway Pit
Muelle de Alfau	32	4	3,00 a 3,50	Slipway Pit
Muelle de Alfau	74	55	3,00 a 3,50	Varadero
Muelle de España: Levante	176	77	9,00 a 9,50	Cruise Liners
Muelle de España: Levante	90	60	8,00 a 9,00	Cruise Liners
Muelle de España: Levante	84	60	3,00 a 5,50	Gen & Cruise Liners
Muelle de España: Poniente	350	60-77	6,00 a 7,50	Gen & Cruise Liners
Muelle Cañonero Dato	260	137	4,00-5,50	RoRo & Cruise Liners
Muelle Cañonero Dato	296	157-177	6,00-7,50	RoRo & Cruise Liners
Muelle Cañonero Dato	257	137	6,00-7,50	RoRo & Cruise Liners
Pantalán Este	53	12	3	Out of Service
Pantalán Oeste	180	12	5	Others

## SHIP SUPPLY FACILITIES

Type of Supply	Location	N. of Points	Hourly capacity of each point	Hourly capacity of the quay	Supplier
Combust. liquids	M.C. Dato	5	Gas-oil 80 Tn./h	Gas-oil 100 Tn./h	Atlas, S.A.
Combust. liquids	M. Poniente	10	Fuel-oil 325 Tn./h	Fuel-oil 400 Tn./h	"
		10	Fuel-oil 275 Tn./h	Fuel-oil 400 Tn./h	"
		10	D.-oil 240 Tn./h	D.-oil 240 Tn./h	"
		10	Gas-oil 125 Tn./h	Gas-oil 125 Tn./h	"
	M.C. Dato	2	Gasol. 100 Tn./h	Gasol. 100 Tn./h	"
		7	D.-oil 100 Tn./h	D.-oil 100 Tn./h	"
		7	Gas-oil 100 Tn./h	Gas-oil 100 Tn./h	"
	M. de Levante	7	Fuel-oil 400 Tn./h	Fuel-oil 400 Tn./h	Petrolífera
		7	D.-oil 400 Tn./h	D.-oil 400 Tn./h	Ducar, S.L.
		7	Gas-oil 200 Tn./h	Gas-oil 200 Tn./h	"
M. de Poniente	8	Fuel-oil 400 Tn./h	Fuel-oil 400 Tn./h	"	
	8	D.-oil 400 Tn./h	D.-oil 400 Tn./h	"	
	8	Gas-oil 300 Tn./h	Gas-oil 300 Tn./h	"	
	8	Gas-oil 300 Tn./h	Gas-oil 300 Tn./h	"	
Liquid Gases from Petroleum	M. de Poniente	1	G.L.P. 100 Tn./h	G.L.P. 100 Tn./h	Atlas, S.A.
Water	M. de Poniente	35	150 Tn. /h	900 Tn. /h	Port Authority
	M. de Levante	16	150 Tn. /h	400 Tn. /h	
	M. de España	19	150 Tn. /h	500 Tn. /h	
	M.C. Dato	10	150 Tn. /h	600 Tn. /h	
Water	M. Deportivo & M. Pescadores				ACEMA

Crane available at Poniente Berth: 1 Macosa 30 Tm (please request info)

### Fishing Basin

Dique 1	56	10	3,00 a 3,50	Fishing
Muelle de Ribera	80	46-94	3	Fishing

### Sport Basin

1º alineación	190	20-26	2,00 a 3,00	Leisure
2º alineación	83	9	1,50 a 2,00	Leisure
3º alineación	17	13	1,5	Leisure
4º alineación	28	16	1,50 a 2,00	Leisure
5º alineación	250	14-23	2,00 a 3,00	Leisure
6º alineación	49	60-104	2	Leisure
7º alineación	42	5-16	2,00 a 3,00	Leisure

