

**Gibraltar • Spain • Morocco • Malta • HUB**

**Head Office GIBRALTAR**

+350 200 12777  
agency.gibraltar@mhbland.com

**MOROCCO**

+212 539 935 875  
agency.tangier@mhbland.com

**SPAIN & HUB: Worldwide**

+34 956 798 027  
hub@mhbland.com

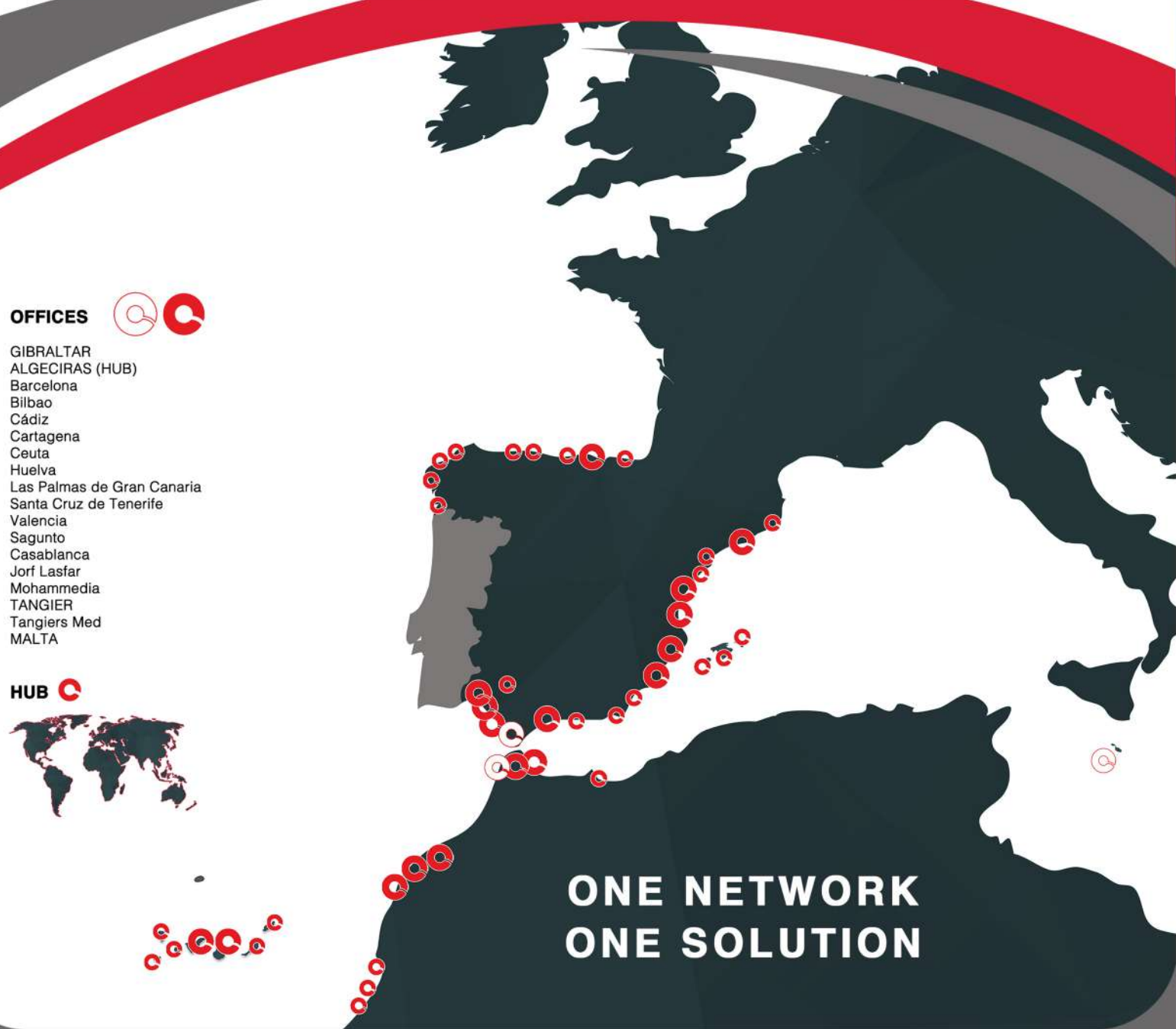
**MALTA**

+356 2703 9971  
agency.malta@mhbland.com

**OFFICES**

- GIBRALTAR
- ALGECIRAS (HUB)
- Barcelona
- Bilbao
- Cádiz
- Cartagena
- Ceuta
- Huelva
- Las Palmas de Gran Canaria
- Santa Cruz de Tenerife
- Valencia
- Sagunto
- Casablanca
- Jorf Lasfar
- Mohammedia
- TANGIER
- Tangiers Med
- MALTA

**HUB**



**ONE NETWORK  
ONE SOLUTION**



**GENERAL INFORMATION**

Tangier Med is a global logistics gateway located on the Strait of Gibraltar and connected to 186 ports worldwide with handling capacities of : 9 million containers, exports of 1 million new vehicles, 3 million passengers and 700 000 trucks on an annual basis. Tangier Med is an industrial hub for more than 900 companies representing various sectors such as automotive, aeronautics, agribusiness, logistics, textile, trade and services.

Thanks to the unique position, at the conjunction of major maritime routes, East / West and North / South, Tangier Med is a natural trans-shipment hub for global logistics flows. More than 100 000 ships a year and 200 cargo ships cross the Strait of Gibraltar daily. The largest liners sailing to destinations in Asia, Europe, Americas and Africa operated by the leading shipping companies such as Maersk Line, MSC, CMA CGM connect Tangier-Med with the rest of the world.



# PORT OF TANGIER MED FACILITIES

## PORT AND TERMINALS INFO

**ISPS:** Yes    **Unlocator Code:** MAPTM    **Country:** Morocco

**Time:** GMT +1 (summertime GMT +2)

**Longitude** 5° 48' 8" W    **Latitude** 35° 47' 15" N

**Prevailing Wind:** E    **Dominating Wind:** SW

**Airports:** 70km / 1 hr by road to Tangier Aiport

## PORT INFRASTRUCTURE

Tangier Med is a port complex that is divided into 3 main ports.

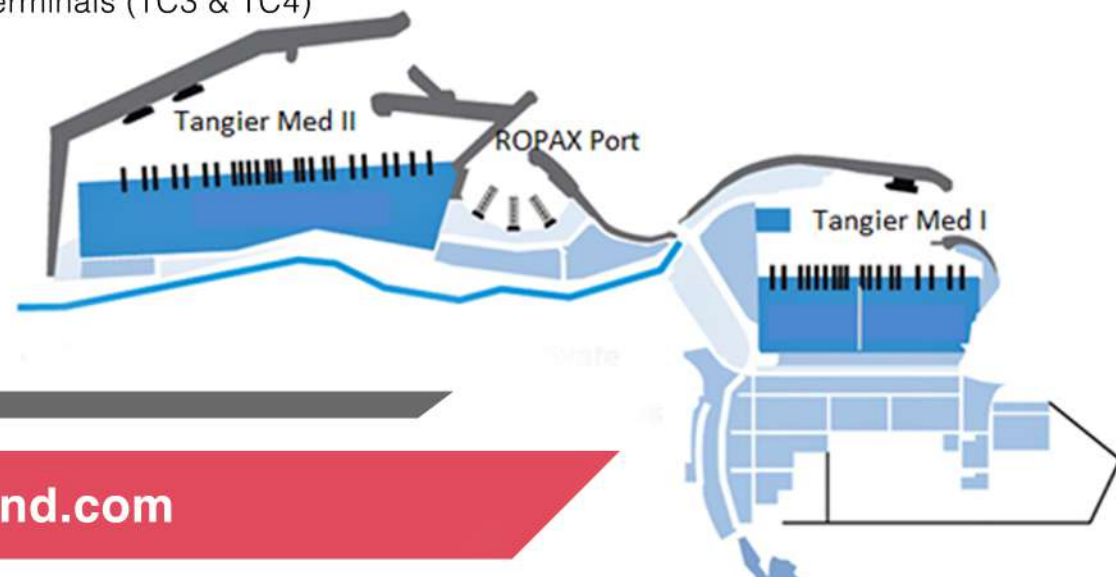
**1. Tangier Med I:** is comprising the following terminal facilities :

- 2 Container Terminals (TC1 & TC2)
- Petroleum Terminal
- Bulk & Breakbulk Terminal
- Car Terminal

**2. RORO & Passengers Port:** dedicated to handling passengers & truck flow.

**3. Tangier Med II:** *Under Construction*

- 3 Container Terminals (TC3 & TC4)



## CONTAINER TERMINAL

- 16 Super-Post Panamax quay cranes
- 80 Hectares of storage area (yard)
- Maximum draft of 18 m
- 50 Rubber Gantry Cranes
- 1600 m of wharfage length

## PETROLEUM TERMINAL

The terminal is operated by a consortium of 3 leading companies in the Oil & Gas Industry :

- Horizon Terminal
- Independent Petroleum Group
- Akwa Group

It is dedicated to the handling & storage of refined products that serve 3 main activities :

- The bunkering of merchant vessels that pass through the Strait of Gibraltar
- Importation of refined products for internal consumption
- Transshipment activity with reference to the neighboring ports of Gibraltar & Ceuta.

### Main Characteristics

- Annual storage capacity is 512,000 m<sup>3</sup>,
- 3 berths are available:
  - o PP1    Max LOA: 250 m    Max depth: 15 m
  - o PP2    Max LOA: 180 m    Max depth: 12m
  - o PP3    Max LOA: 110 m    Max depth: 7m

## BREAK & BREAK BULK TERMINAL

Used for the handling, importation & exportation of various goods related mainly to the industrial manufacturers based in the regional free industrial & logistics zones.

### Main Characteristics

- Pier length 560 m :
  - o Draft of the 1<sup>st</sup> 200 m: 10.80 m
  - o Draft of the remaining 360 m: 13.50 m
- 3 Quay Cranes: capacity 45t, 65t & 100t
  - o The max number of cranes per vessel: 2
- Usage: Wheat, Wood, Clay, Steel Coils & Scrap Iron

## CAR TERMINAL

With a capacity of handling more that 1 million vehicles per year, the terminal handles importation, exportation and transshipment.

### Main Characteristics

- Accomodates Pure Car & Trucks Carriers: Max LOA 240 m
- 2 berths are available: PVS and PVN
- The Car Terminal is divided into 2 sub terminals:
  - o 13 Hectares: Renault exportation traffic
  - o 7 Hectares: common users (importation and transshipment)

## RORO & PASSENGER PORT

Due to the geographic proximity to Europe this area of the port is designed as a bridge on the Strait of Gibraltar. between Africa and Europe.

### Main Characteristics

- Equipped with 8 Berths, each with a depth of 8 m
- 35 hectares for parking
- Regular daily connections with Algesiras, Motril, Sete & Genoa